



TYPE FORMS IN 3D

Assignment #3

TABLE OF CONTENTS

TABLE OF CONTENTS

OPENING THOUGHTS.....

FONT & LETTERS.....

30 SKETCHES.....

6 CHOSEN.....

PROTOTYPE

CONSTRUCTION

FINAL IMAGES

REFLECTION

OPENING THOUGHTS

OPENING THOUGHTS

This third assignment definitely is challenging but I like how we are now making something 3D. I see how the previous assignment definitely helped prepare me for this one so I'm thankful that I have a better understanding of how to create good compositions. I'm excited to have the final cube and see how it looks as well as being able to put it somewhere in my house as decoration.

FONT & LETTERS

FONT & LETTERS

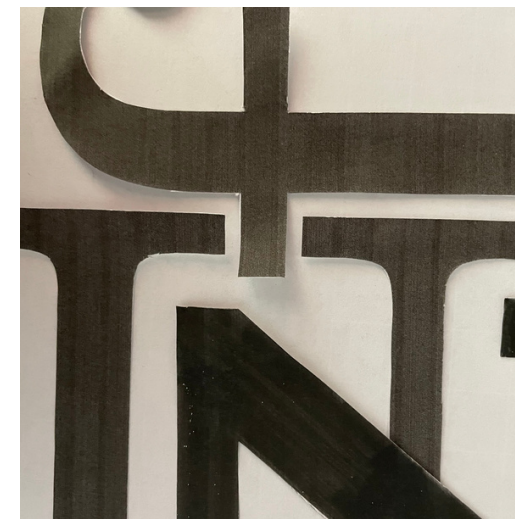
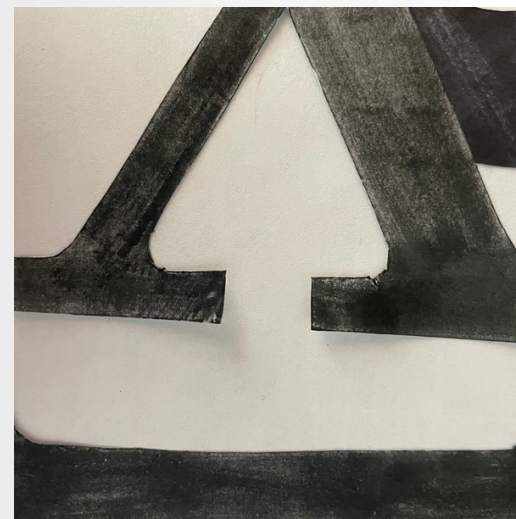
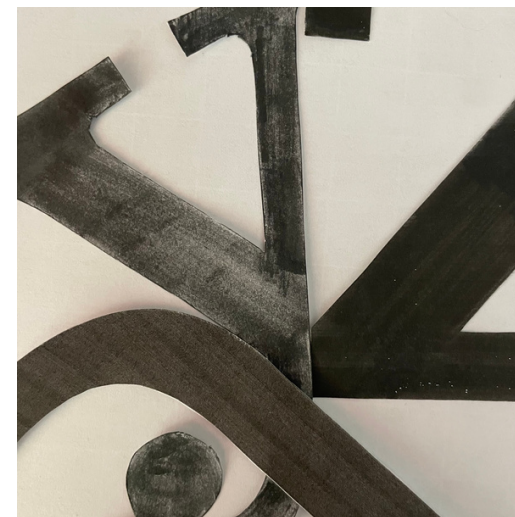
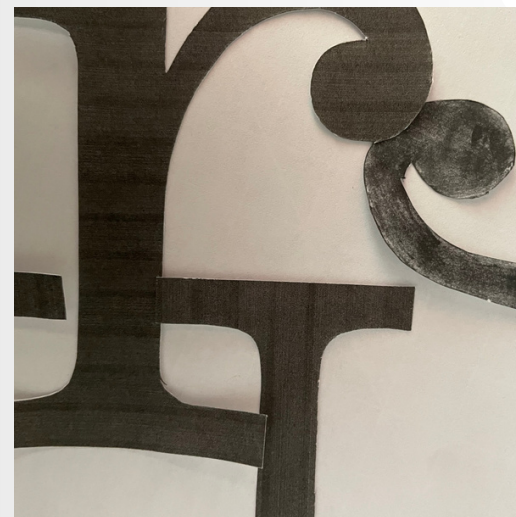
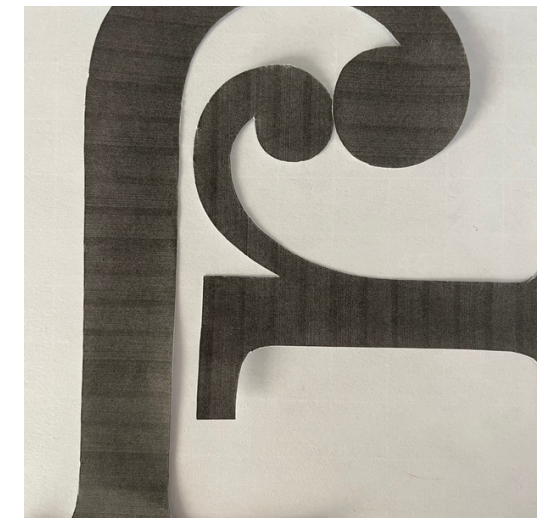
Picking a font was a little bit difficult. I wanted to choose a font that had a thick stroke but also a serif so I felt that Clarendon URW fit the best.

fe rg
nz H
is

30 SKETCHES

30 SKETCHES

Making these sketches was actually a lot of fun. I feel like I've gotten better at it since the last assignment, so taking that into account allowed me to create better sketches with more form and counterform

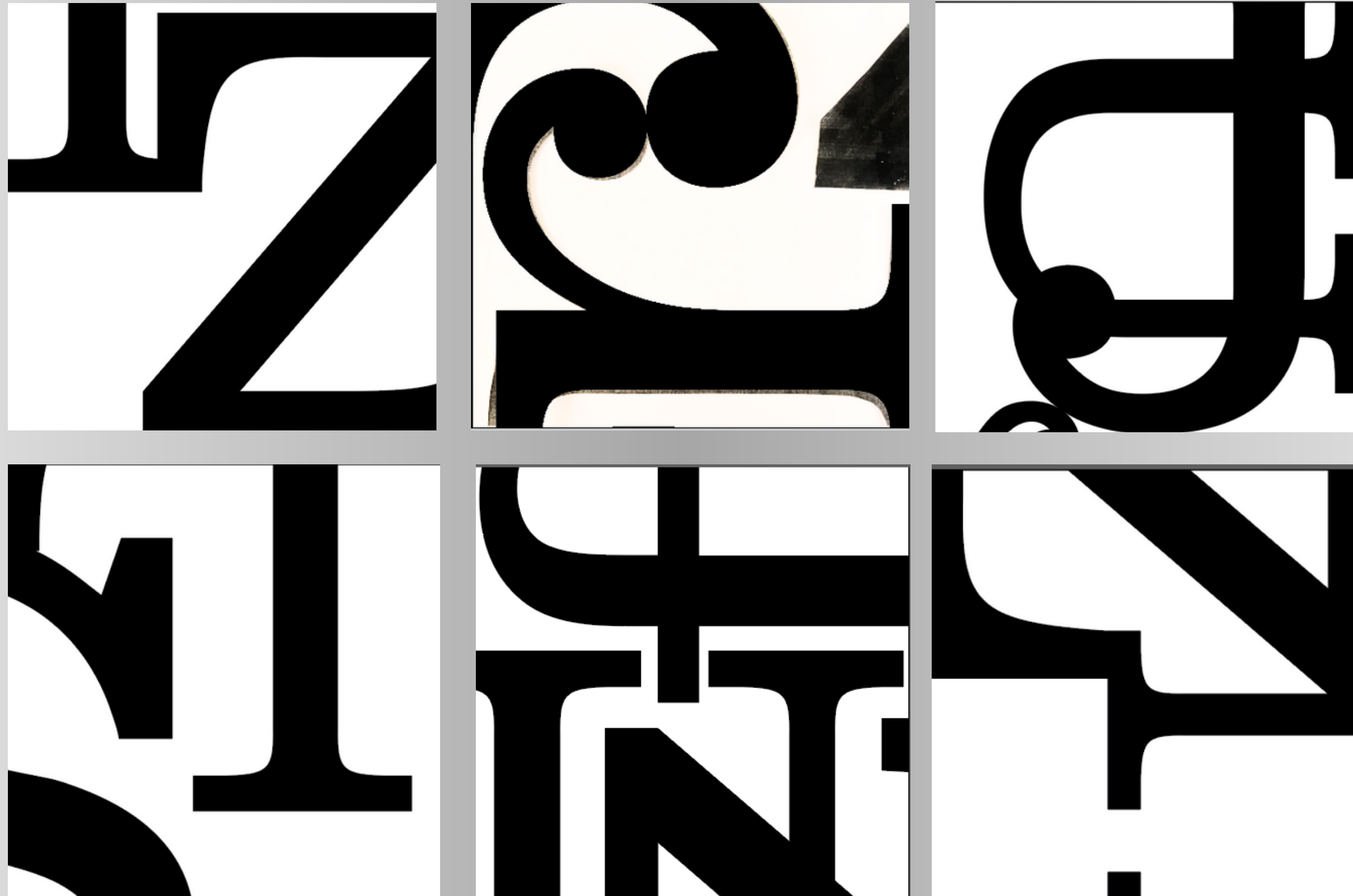




30 SKETCHES
30 SKETCHES

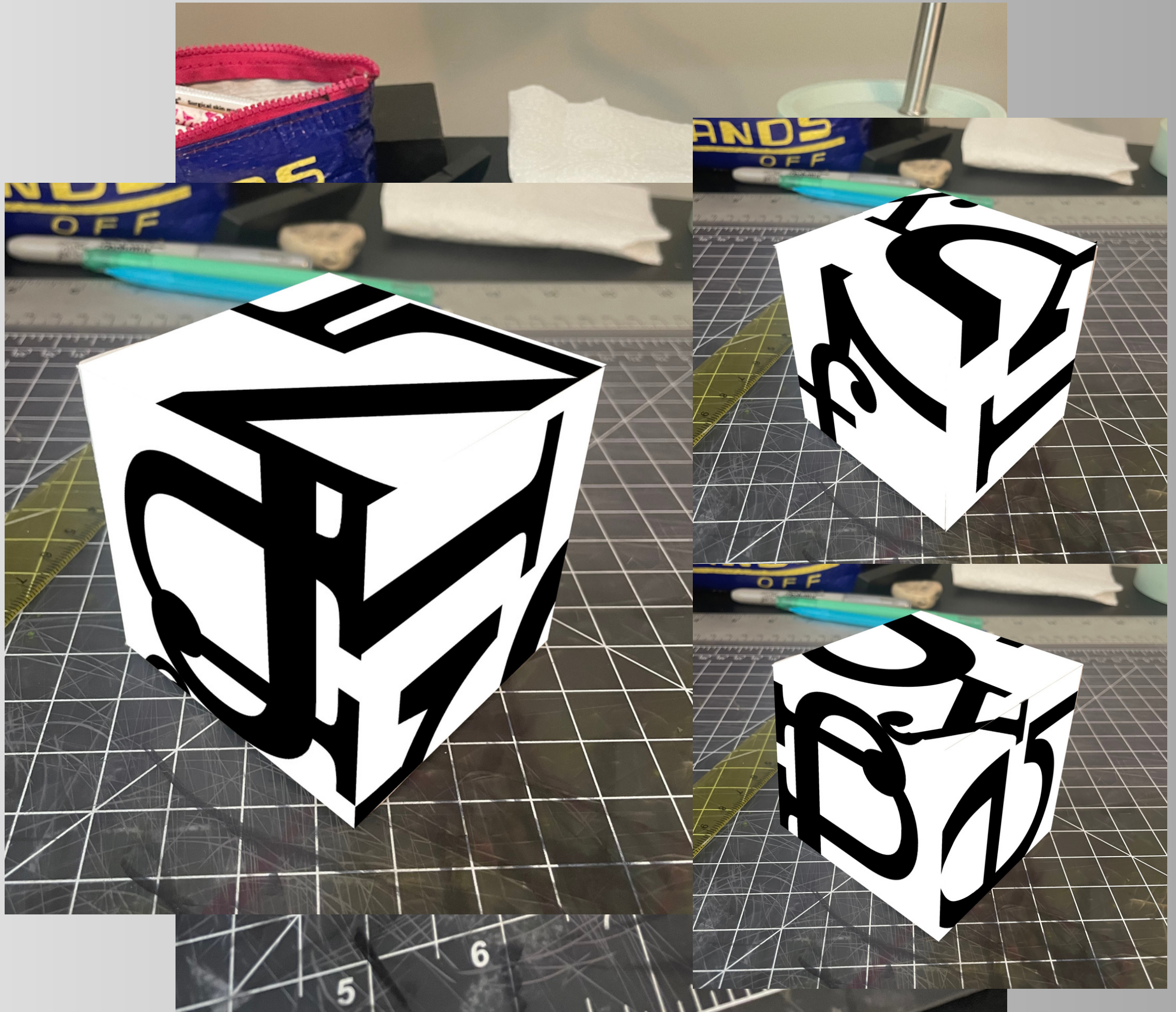
6 CHOSEN

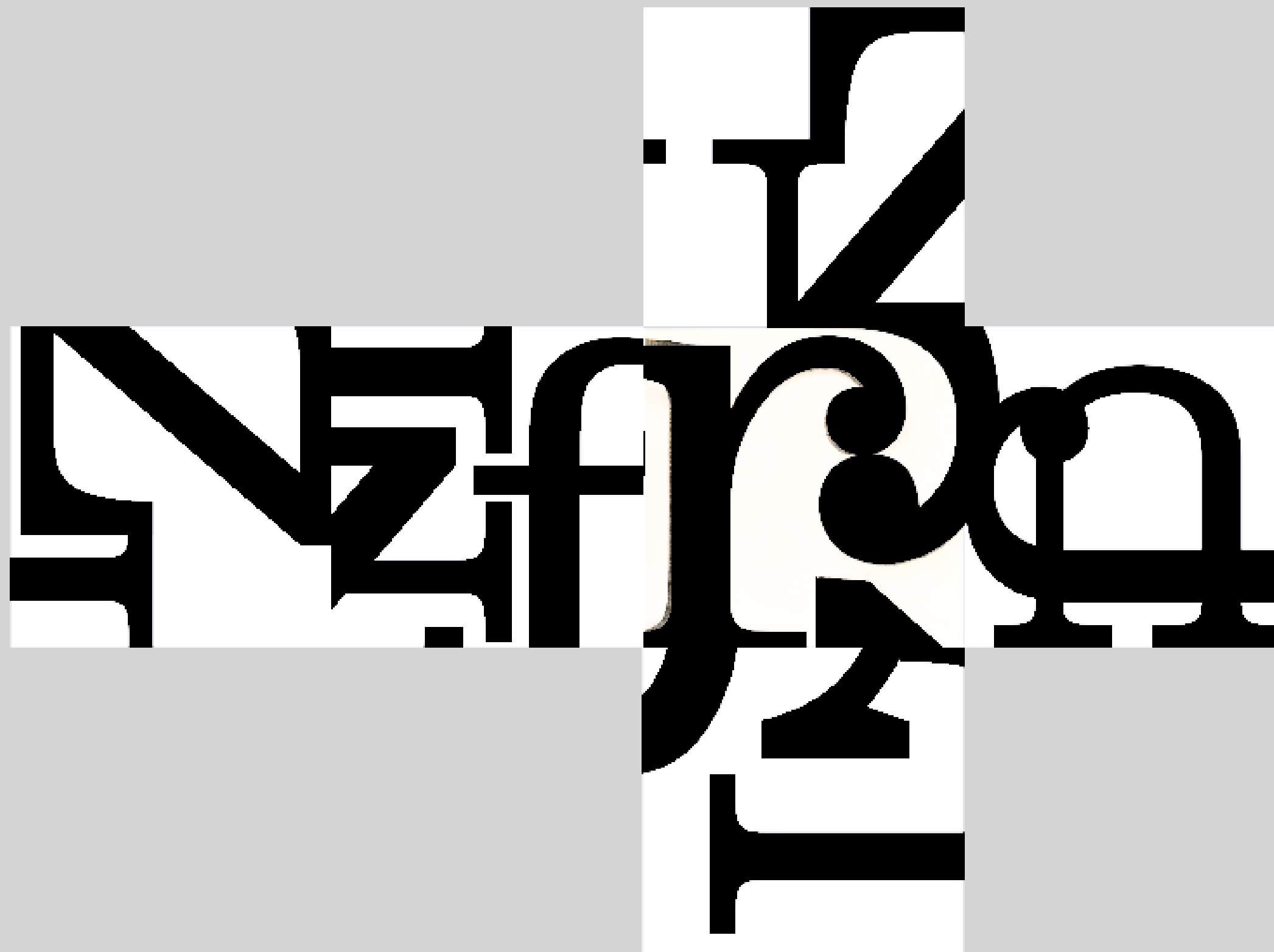
I chose these 6 sketches because I felt like they had the best form and counter form as well as working well together



PROTOTYPE

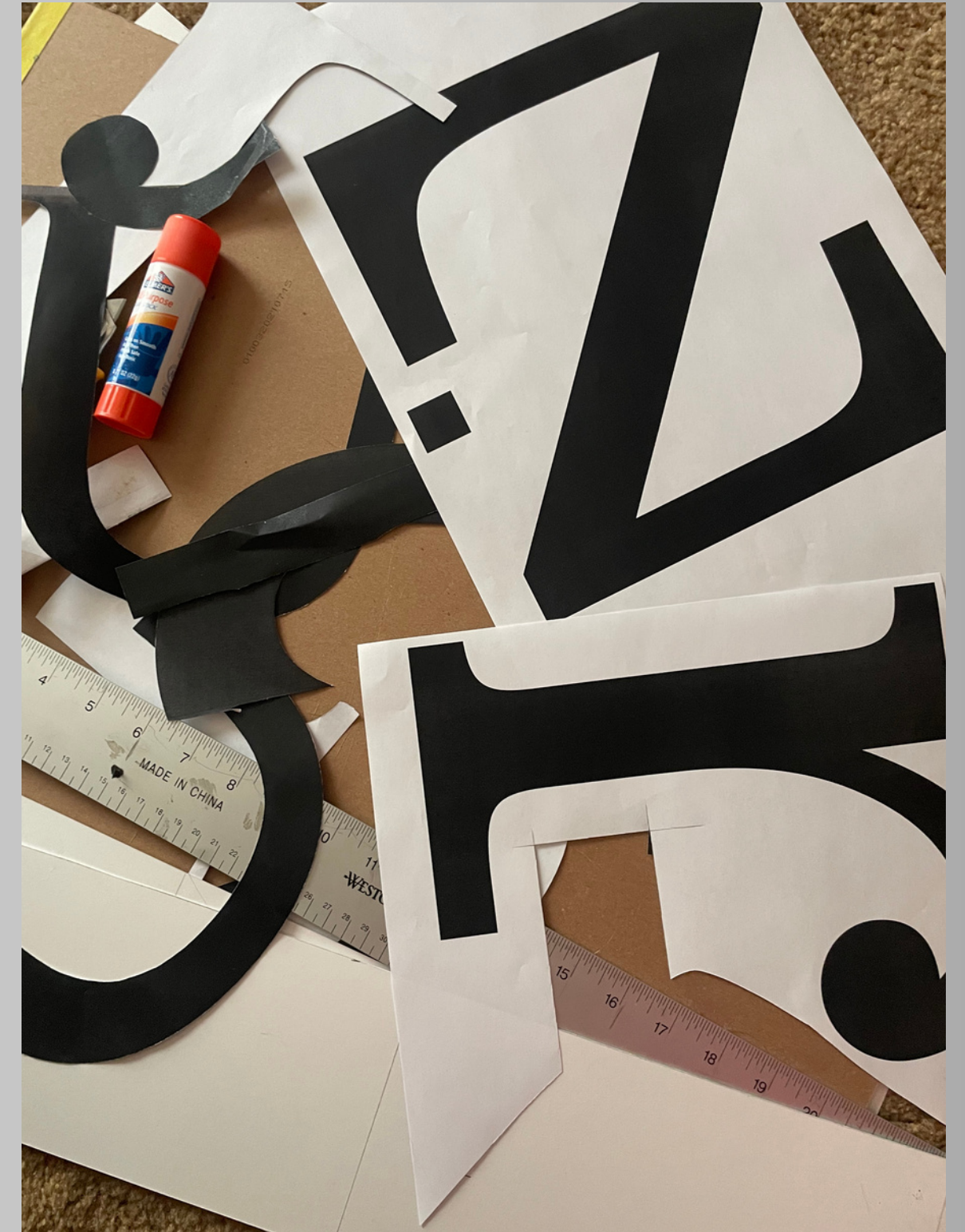
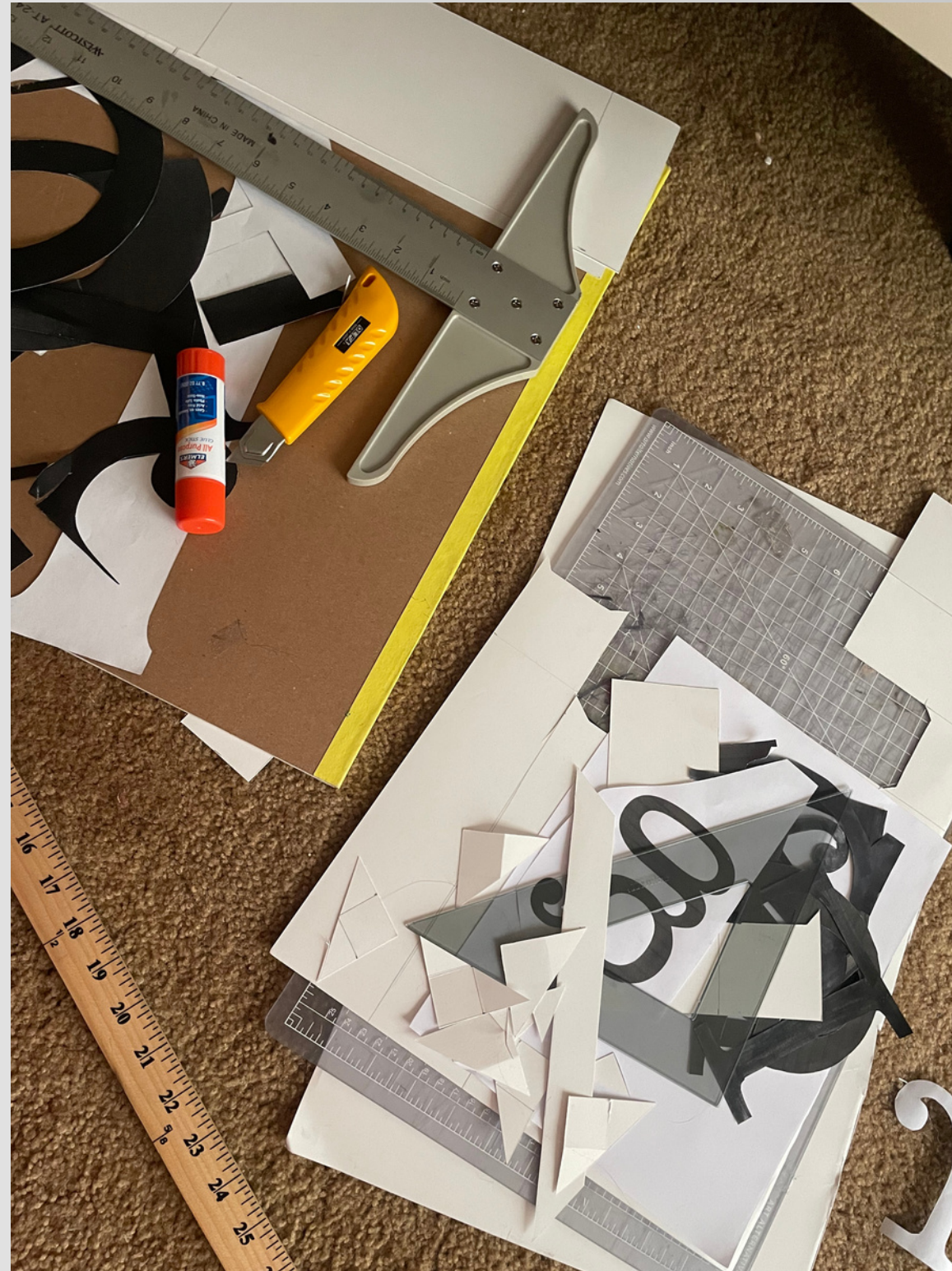
PROTOTYPE





UPDATED PROTOTYPE

Cutting out the letters
and constructing the
box was an annoying
process but very doable.
The whole time I was
just looking forward to
putting everything
together



CONSTRUCTION
CONSTRUCTION



FINAL IMAGES
FINAL IMAGES

REFLECTION

Overall this third assignment definitely was not fun whatsoever. Although I do like constructing physical things the pressure of everything needing to be perfect takes away the fun. On a better note, I am really happy with how it turned out and I feel like I did an exceptional job with form, counter form, and flow.