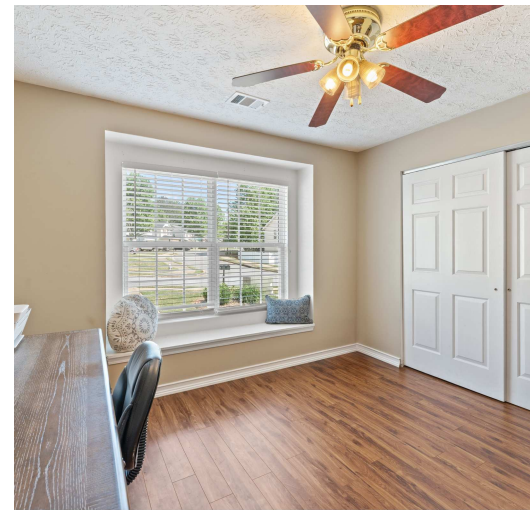
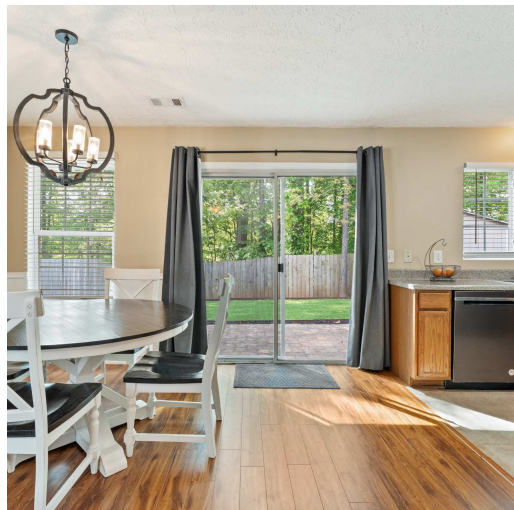




Peaceful Living & Convenience



SLOW DOWN AND TAKE THIS ONE IN! FEEL IT.

171 Nacoochee Way, Canton, GA 30114

This brick-front ranch in The Enclave at Holly Mill is close to I-575, shopping, dining, and schools. It has an open layout with a family room, dining area, and kitchen featuring stainless steel appliances and a pantry. Beautiful floors run through the living areas and three bedrooms. The primary suite includes a full bath, and there are two additional bedrooms with a second full bath.

\$325,000

 **3 BEDS**

 **2 BATHS**

 **1,214 SQ FT**

MLS #: 7570116

www.BrendaFranklin.com.com



BECAUSE THIS IS WHAT HOME FEELS LIKE

Side-set front entry adds privacy and charm. In the backyard, enjoy a large stone paver patio, an attractive turf lawn, a storage shed, and a private solid-fenced yard, perfect for quiet moments or entertaining.



REALTOR®

BRENDA FRANKLIN, SRS

Office: 770-240-2005

Cell: 678-761-6699

Email: Brenda@BrendaFranklin.com

Web: www.BrendaFranklin.com



Please visit our website for more information www.BrendaFranklin.com