



WOODSTOCK'S
NEW URBAN VILLAGE



• THE RICHARDSON MODEL HOME •



WELCOME TO WOODSTOCK'S NEW URBAN VILLAGE BY THE JOHN WIELAND TEAM

South on Main is indelibly crafted by Atlanta's most experienced homebuilding team. More than just a neighborhood, it's a way of life – a place to rediscover and celebrate the things in life that you love most, easily and naturally. Connect and unwind at the neighborhood parks. Grab your bike and hit the trail for a short ride to Downtown Woodstock. Stroll the shops of Main Street, and find your favorite dinner spot. Inspire your creativity at the Elm Street Cultural Arts Village. Or just enjoy a sunny spot by the pool.

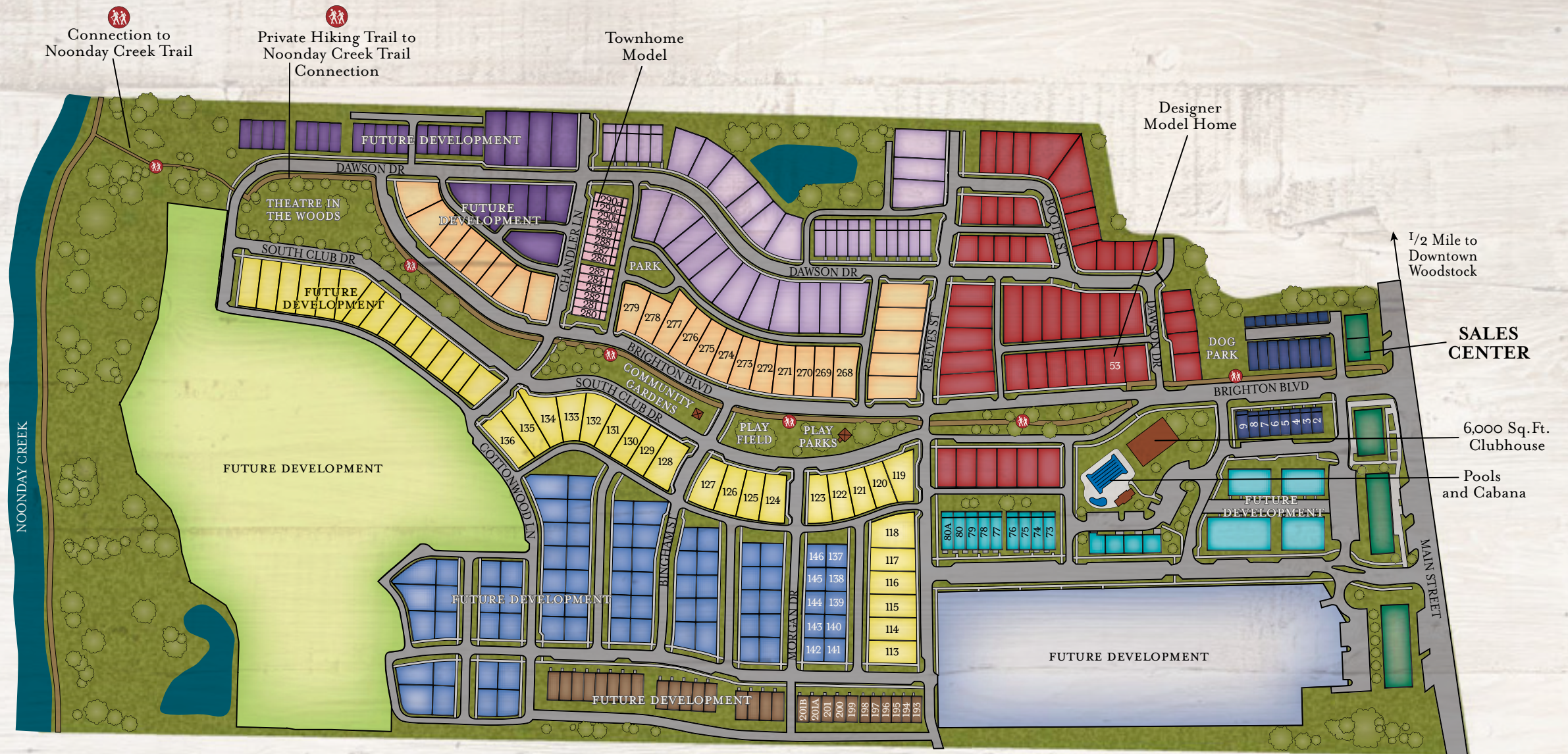
All this and more is at your doorstep at South on Main, Woodstock's New Urban Village.



• DOWNTOWN WOODSTOCK •



• THE MCDANIEL •



	THE HAMPTONS		EDGEWOOD
	THE PRESERVE		THE HERITAGE
	PARKSIDE SOUTH		CLUBVIEW
	PARKSIDE NORTH		ALEXANDRIA
	IDLEWILDE		THE LANDING
			THE WOODLAND

▲ N
THIS PLAN IS REPRESENTATIONAL, NOT TO SCALE AND IS SUBJECT TO CHANGE AT THE DISCRETION OF THE DEVELOPER.

NEIGHBORHOOD FEATURES

- 6,000+ Square Foot Residents' Club
- Sidewalks Connecting You to Neighbors, Parks and Downtown
- Direct Access to the Noonday Creek Trail
- Swimming Pool and Kids Splash Pool
- Play Park, Pocket Parks and Picnic Areas
- Community Garden and Theatre in the Woods



• OUR SWIMMING POOL AND CABANA •



• THE CENTURY OAK •

A VISION FOR TODAY WITH TIMELESS INSPIRATIONS

Guided by the unique vision of John Wieland, every corner of South on Main is thoughtfully planned and crafted for the way you want to live. That means club amenities to enjoy, green spaces to explore, gardens to tend, trails to follow and even shops, services or maybe your own office right at your doorstep at The Shoppes at South on Main. South on Main's expert master plan shows just how beautiful living well can be in a timeless setting that comes to life every day.



• SOUTH ON MAIN SALES CENTER •

HOME COLLECTIONS



THE RICHARDSON

OUR CLASSIC 4-STORY WOODSTOCK HOMES WITH SKY TERRACES, FULL LOWER TERRACE LEVELS AND ELEVATORS AVAILABLE.



THE PARKER

ELEGANT 3-STORY HOMES WITH ALLEY-SERVED GARAGES.



THE BISHOP

SPACIOUS 3-STORY DESIGNS WITH MAIN LEVEL GARAGES AND ROOM TO GROW.



THE ALEXANDER

LOW MAINTENANCE LUXURY TOWNHOMES WITH GARAGES.



THE WINDWOOD

SOPHISTICATED 3-STORY ELEVATOR CAPABLE TOWNHOMES WITH ALLEY-SERVED GARAGES.



• THE RICHARDSON •

TRADITIONAL CHARM MEETS MODERN COMFORT

Among all its inviting green spaces and gathering places, South on Main's streets are lined by charming new homes and townhomes with detailed architecture inspired by the historic surroundings. A variety of home collections offer the space, style and function to suit your individual lifestyle – whether in an elevator-served home with a rooftop sky terrace or a low-maintenance townhome along the boulevard.



• SKY TERRACES •



• THE ANDREWS •



• TIMELESS ARCHITECTURAL DETAILS •

INSPIRED ARCHITECTURE DETAILED FOR TODAY

Traditional architectural detailing, meticulously designed and crafted, adds charm and sophistication to each new home and townhome at South on Main. Personalize your new home with all the right finishing touches at our New Home Design Studio with the help of a professional design consultant. And rest assured as all new homes at South on Main are protected by JW Collection's comprehensive insured warranty.



• HOMES ON BRIGHTON BOULEVARD •



BUILT WELL TO LIVE WELL



DOUBLE-PANE
LOW-E WINDOWS

14 SEER HIGH EFFICIENCY
HVAC SYSTEMS WITH
PROGRAMMABLE
THERMOSTATS

ENHANCED INSULATION

BLOWER DOOR TESTING
ON EVERY HOME

ENERGY STAR®
QUALIFIED APPLIANCES



LOW-VOC PAINT
AND CARPETS

CUSTOM DESIGNED
VENTILATION SYSTEM FOR
BETTER INDOOR AIR QUALITY

VENTED FIREPLACES*



SIDEWALKS THROUGHOUT,
A SHORT WALK TO
HISTORIC DOWNTOWN

NEIGHBORHOOD BIKE
PATHS AND BIKE RACKS

DIRECT ACCESS TO THE
NOONDAY CREEK TRAIL



6,000+ SQUARE FOOT
RESIDENTS' CLUB

SWIMMING POOL

CHILDREN'S PLAYGROUND

NEIGHBORHOOD
FITNESS CENTER



COMMUNITY GARDEN

POCKET PARKS AND GREEN
SPACE THROUGHOUT

NEIGHBORHOOD DOG PARKS

PICNIC AREAS



• OUR CLUBHOUSE •

BUILT WELL FOR A LIFE LIVED BETTER

At South on Main, the power of thoughtful design, smart construction and true connection combine in JW Green Living. Our green living is about more than just responsible design and lower utility bills alone. It's a whole way of life that you'll love – smart, sustainable and connected, inside and out.



• OUR PLAYGROUND •



• OUR SWIMMING POOL •



THE OUTLET SHOPPES AT ATLANTA

PUBLIX



RIDGE WALK PKWY

IPP'S PASTARIA & BAR, SALON & SPA VENESSA

WOODSTOCK PKWY

WOODSTOCK ELEMENTARY SCHOOL

MAIN ST

LIBRARY

ROOTSTOCK & VINE WINE BAR

NORTHSIDE HOSPITAL CHEROKEE

ELM STREET CULTURAL ARTS VILLAGE

VINGENZO'S, FOX TALES BOOKS

TOWNE LAKE HILLS S DR

TOWNE LAKE PKWY

AMPHITHEATER

WOODSTOCK HIGH SCHOOL

TRUCK & TAP

FREIGHT KITCHEN AND TAP

WOODSTOCK MIDDLE SCHOOL

SALT FACTORY PUB, REFORMATION BREWERY, REEL SEAFOOD

PURE TAQUERIA, CANYON'S BURGER CO, COPPER COIN, J. CHRISTOPHER'S

WELLSTAR MEDICAL GROUP

MADLIFE STAGE & STUDIOS



SAM'S CLUB

PRIME 120

CENTURY HOUSE TAVERN

EXIT 7

92

NOONDAY CREEK TRAIL

DUPREE RD

FOWLER ST

ARNOLD MILL RD

TOWNE LAKE PASS TRAIL

EXIT 8

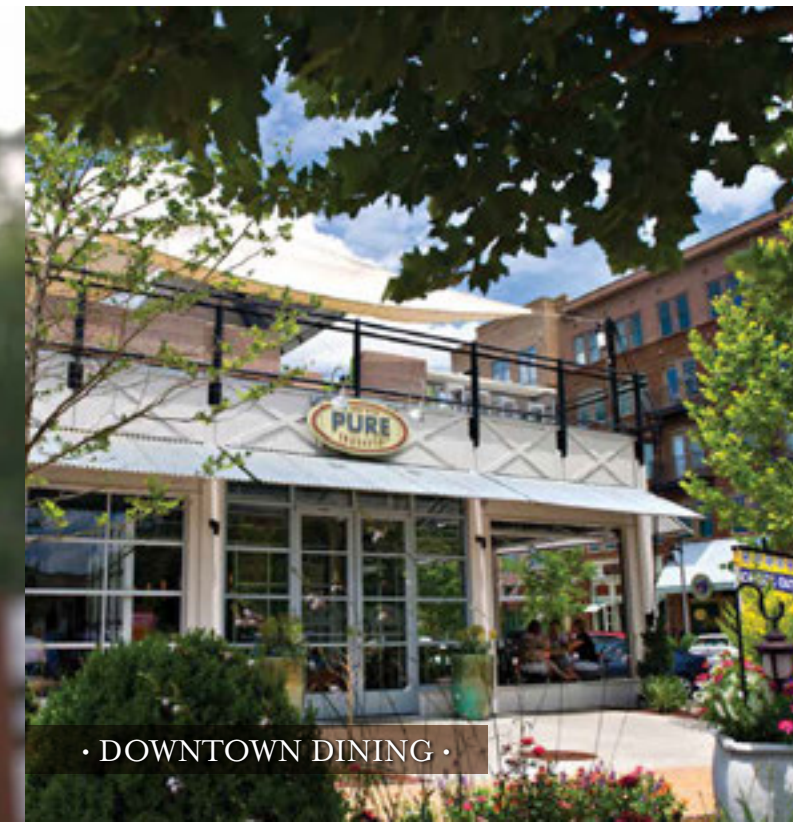


LIVING LOCAL AT ITS BEST

South on Main is ideally located along Woodstock's vibrant Main Street with all its shops, restaurants, arts and activities just a short walk away by sidewalk or trail.

Every convenience is close at hand. A short two miles to I-575 at Highway 92 (Exit 7) offers easy access to all of Atlanta with its new express lane into the city.

WOODSTOCK, GA NAMED ONE OF THE
TOP 50 PLACES TO LIVE BY MONEY MAGAZINE



· DOWNTOWN DINING ·



TRUSTED BY ATLANTANS FOR 50 YEARS

The JW Collection is the legacy business of John Wieland and represents his 50-year commitment to building better homes, a promise he has kept for more than 30,000 purchasers.

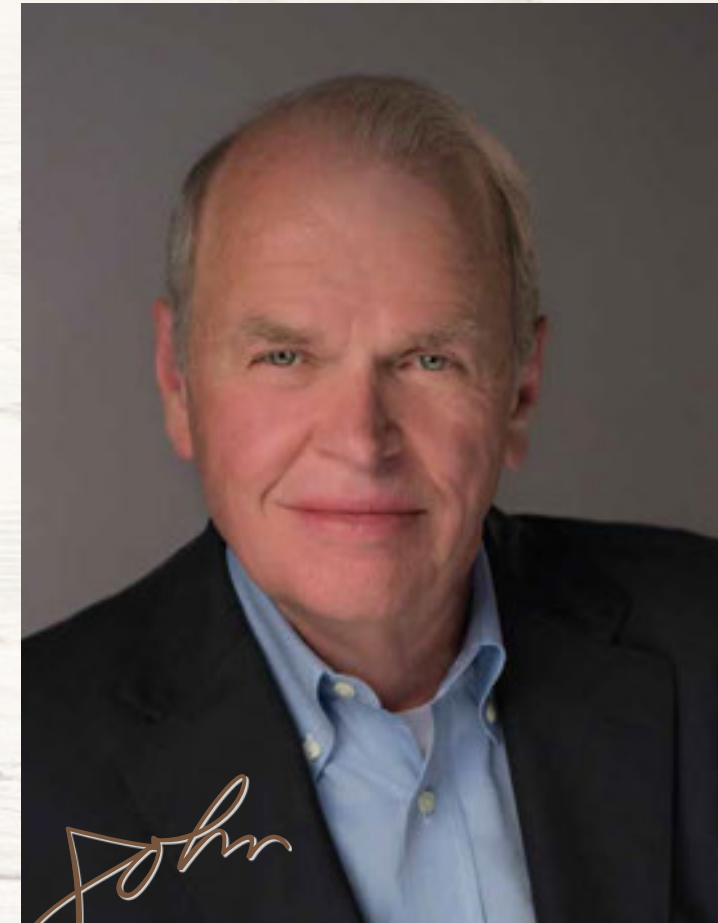
Architectural character both inside and out has been a 50-year fundamental for John. Not only is he involved in the design of new homes on the drafting board, but he walks the prototype for each plan and makes the necessary changes to get every detail just right, both inside and out.

Character as to what the company builds and not quantity is the JW Collection's guiding principle.

Making each home unique and personal for each and every owner is the company's vision and measure for success. A John Wieland home and neighborhood is unlike what any other builder delivers to the Atlanta marketplace. Experience the John Wieland difference at South on Main.



BUILDING BETTER HOMES



John

